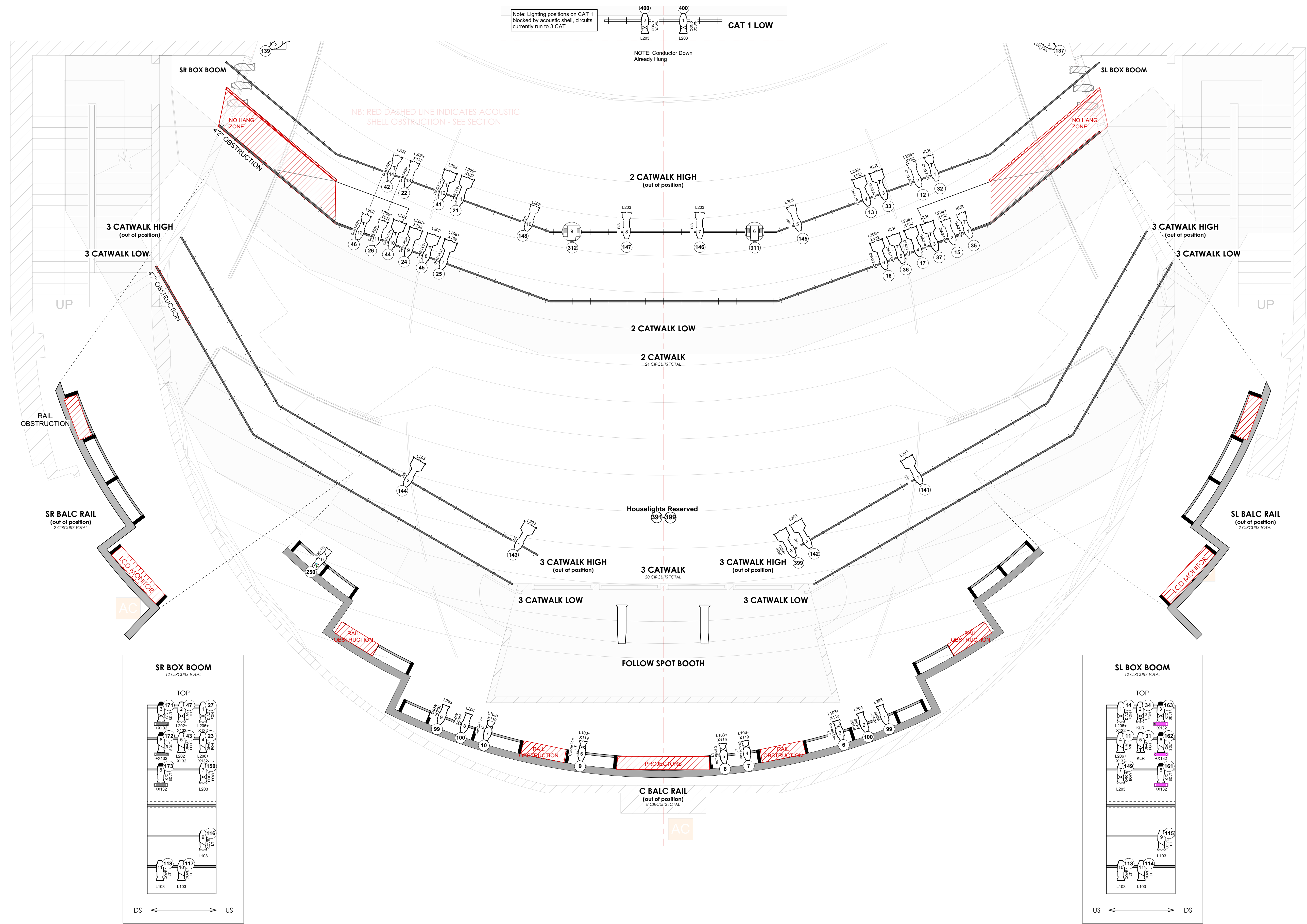
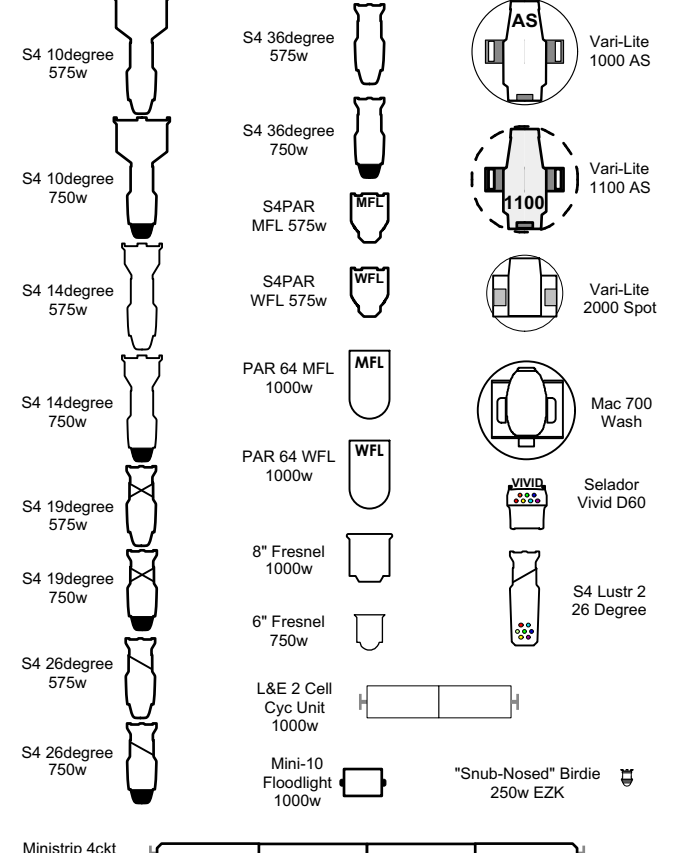


GENERAL NOTES

* ALL CHANGES PLEASE DISCUSS WITH THE LIGHTING DEPARTMENT STAFF.
 * ALL UNITS ON 18" CENTERS UNLESS OTHERWISE NOTED.
 * CHANNELS 179, 180, 169, 170 SEPARATE CIRCUITS



LIGHTING KEY



ACCESSORIES	Lighting Instrument Legend
Chrome-Q Scroller	Color
Spectra-Q Scroller	Template
House Spotlight TBD	Purpose
	Instrument Number
	Channel
	Accessory Channel
	Flap
	Not all units will contain all of the above information

The Roman Emperor Nero was best known for his political murders, debaucheries, and a passion for music. This love of the arts also led to one of the famous rumors that Nero sang a "fiddled" as Rome burned during the great fire of 64 A.D. The arts were the Emperor's other love, and he held private events in which he would sing and play the lyre; he also encouraged the upper class to dance, and held public games in which he would participate. The Corbets, who so generously gave to the arts and helped to build SCPA, held private concerts in their home as well, although not to highlight their own talent. Following the fire, Nero re-created Rome, and exhausted the treasury in doing so, building the Golden House and the 100-foot tall statue of himself, the Colossus Neronis. The Corbets who have given so much to the arts in Cincinnati would have agreed with Nero's appreciation and funding of the arts, but perhaps not in his desire for excessive self-centeredness. Where Nero gave to the arts in order to benefit his own desires and to showcase his on musical skill, the Corbets have generously given to provide for others countless times. From their contribution to Music Hall, to their funds for SCPA, they always gave to see that other talented artists could pursue their dreams. Nero would have found this devotion to the arts wonderful.

CINCINNATI OPERA
 1243 Elm Street, OH 45202
 (p)513.744.3477, (f)513.744.3452
 www.cincinnatiopera.org

L.D. 659 LIGHTING DESIGNER

SCPA

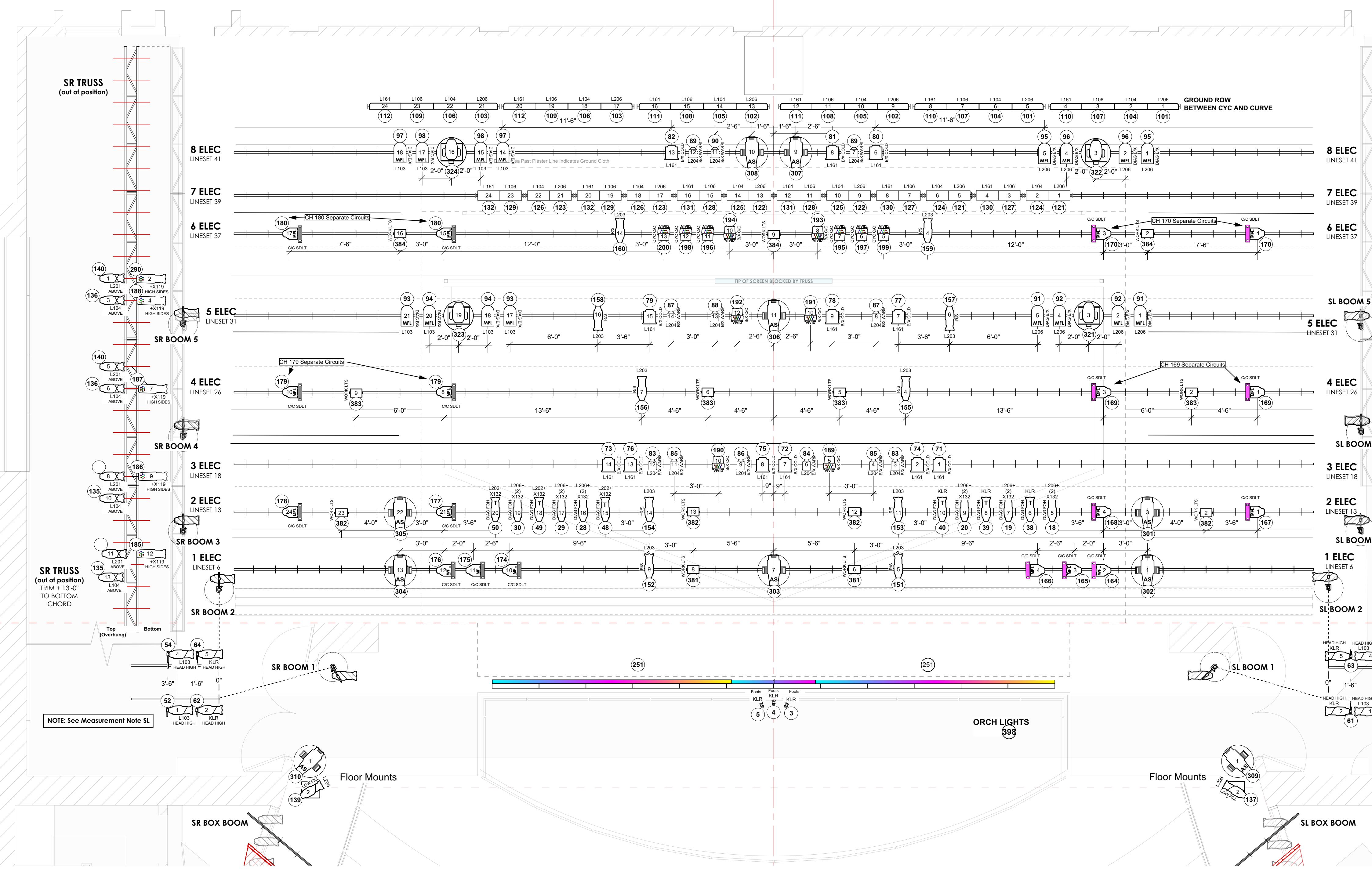
CORONATION OF POPPEA

FOH

2018 SEASON

Lighting Designer: Thomas Hase (hase@haseltd.com)
 Lighting Director: Thomas Hase (hase@haseltd.com)
 Assoc. Lighting Director: Bailey Costa (Bailey.Costa@yahoo.com)
 Production Electrician: EJ Mechley

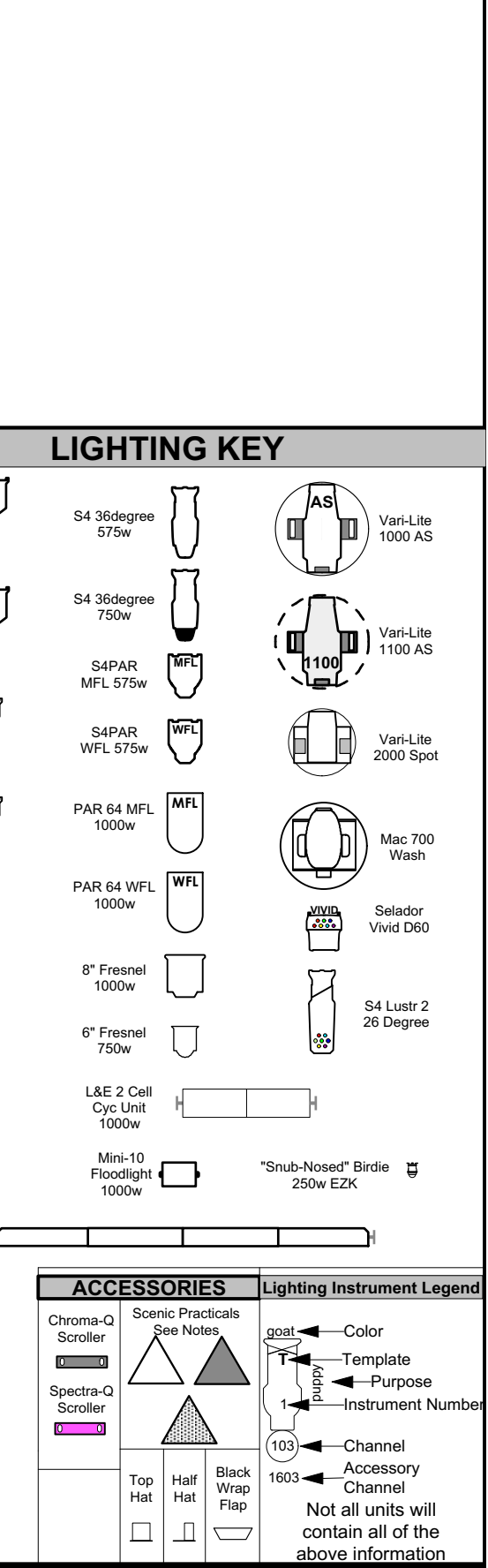
PLATE 1/3



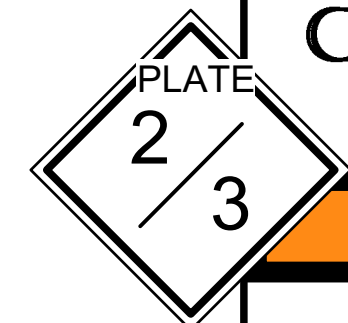
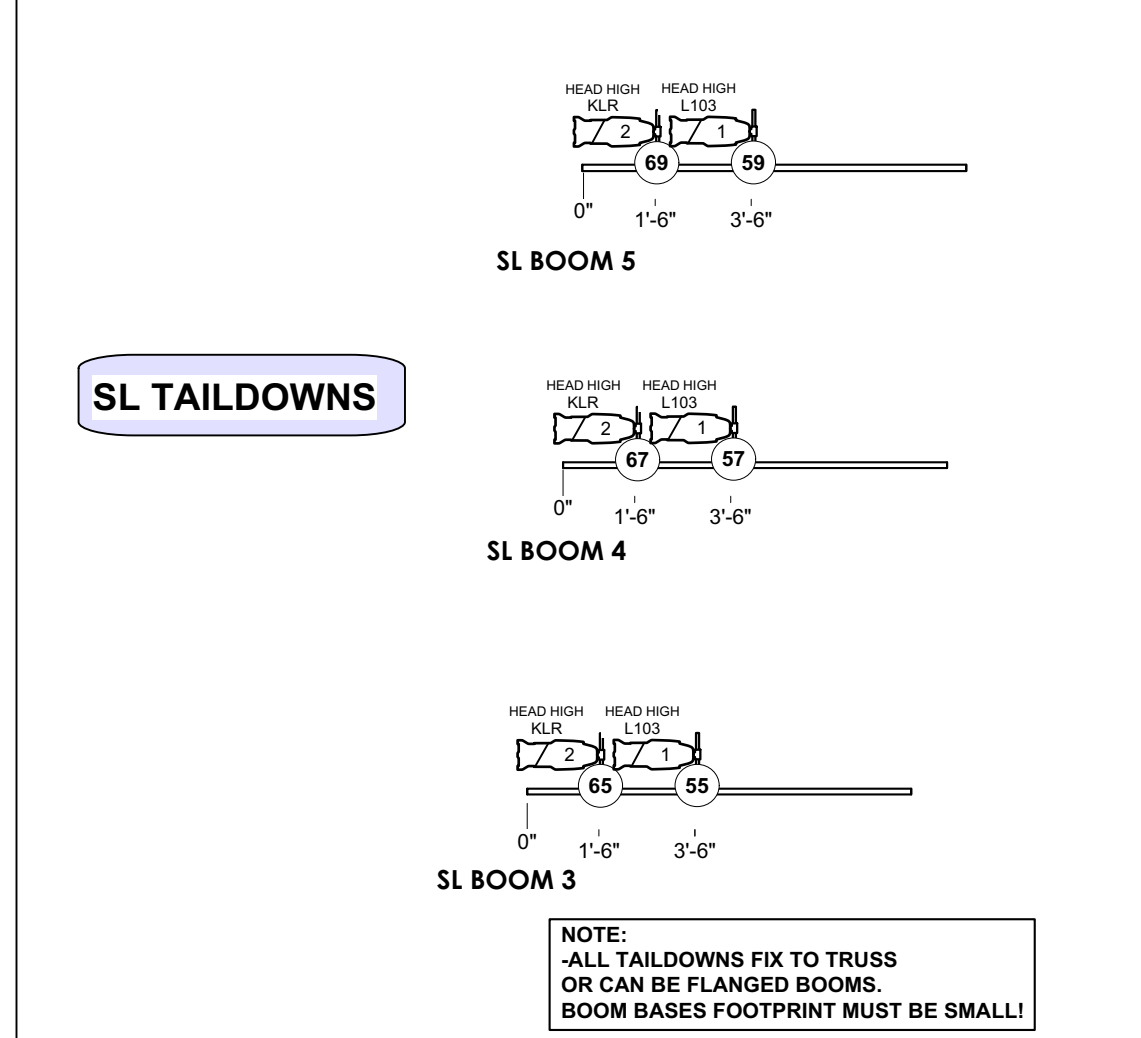
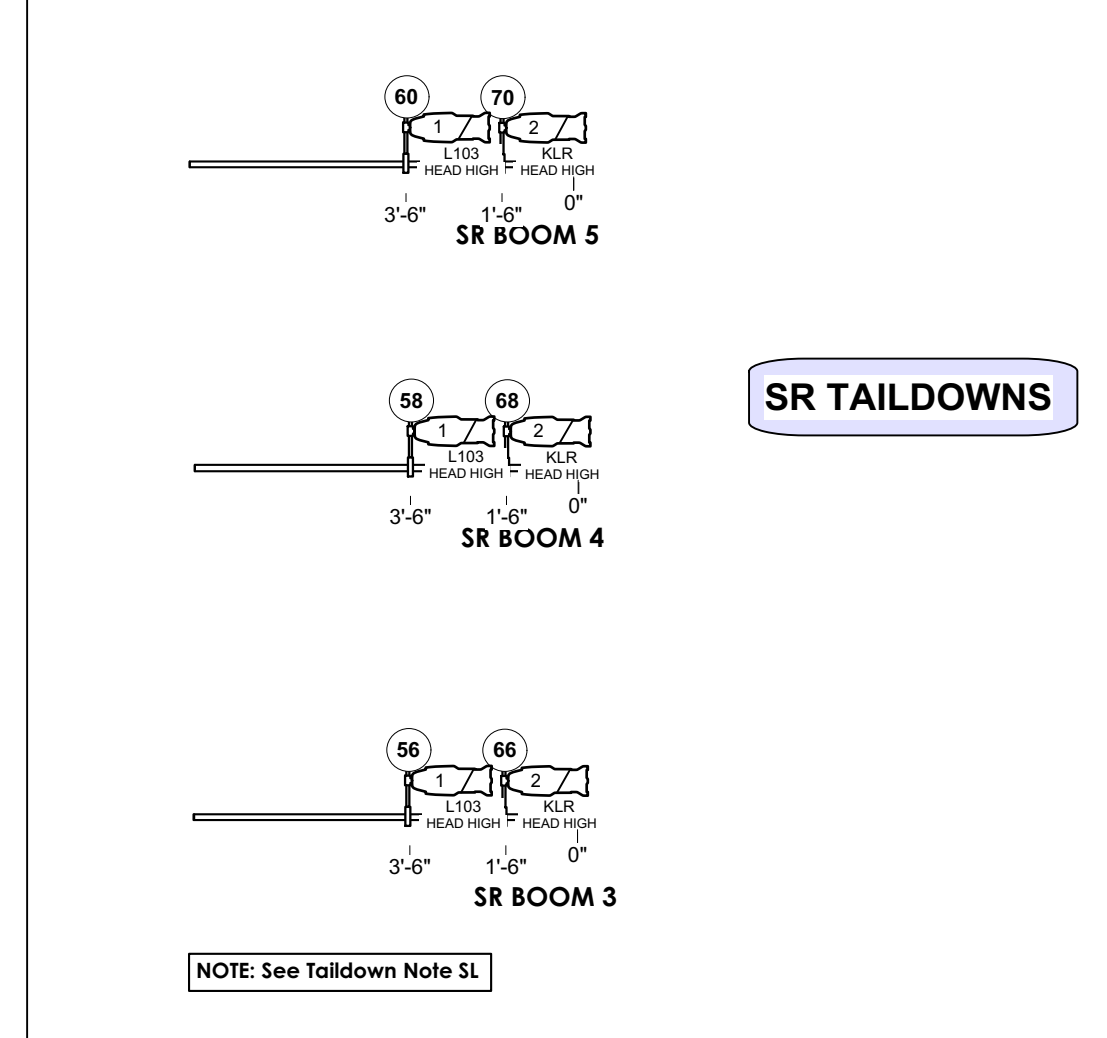
#	LABEL	TRIM
50		
49		
48		
47		
46		
45		
44	BACK DROP	32'0"
43	BLACK BORDER	27'0"
42		
41	8 ELEC	30'0"
40		
39	7 ELEC-STRIPS	29'3"
38	LEGS	
37	6 ELEC	27'10"
36		
35	BLACK BORDER	24'0"
34		
33		
32		
31	5 ELEC	
30	LEGS	
29		
28		
27		
26	4 ELEC	28'0"
25		
24		
23	LEGS	
22	BLACK BORDER	24'0"
21		
20		
19		
18	3 ELEC	31'4"
17		
16		
15		
14	2 ELEC	28'0"
13		
12	LEGS	
11	BLACK BORDER	25'6"
10		
9		
8	1 ELEC	27'6"
7		
6		
5		
4	BOC BORDER	24'0"
3	HOUSE CURTAIN	
2	BLACK SCRIM	
1	MAIN VALANCE	

GENERAL NOTES

- * ALL CHANGES PLEASE DISCUSS WITH THE LIGHTING DEPARTMENT STAFF.
- * ALL UNITS ON 18" CENTERS UNLESS OTHERWISE NOTED.
- * CHANNELS 179, 180, 169, 170 SEPARATE CIRCUITS



The Roman Emperor Nero was best known for his political murders, debaucheries, and a passion for music. This love of the arts also led to one of the famous rumors that Nero sang a "fiddled" as Rome burned during the great fire of 64 A.D. The arts were the Emperor's other love, and he held private events in which he would sing and play the lyre; he also encouraged the upper class to dance, and held public games in which he would participate. The Corbets, who so generously gave to the arts and helped to build SCPA, held private concerts in their home as well, although not to highlight their own talent. Following the fire, Nero re-created Rome, and exhausted the treasury in doing so, building the Golden House and the 100-foot tall statue of himself, the Colossus Neronis. The Corbets who have given so much to the arts in Cincinnati would have agreed with Nero's appreciation and funding of the arts, but perhaps not in his desire for excessive self-centeredness. Where Nero gave to the arts in order to benefit his own desires and to showcase his on musical skill, the Corbets have generously given to provide for others countless times. From their contribution to Music Hall, to their funds for SCPA, they always gave to see that other talented artists could pursue their dreams. Nero would have found this devotion to the arts wonderful.



CINCINNATI OPERA
 1243 Elm Street, OH 45202
 (p)513.744.3477, (f)513.744.3452
 www.cincinnatiopera.org

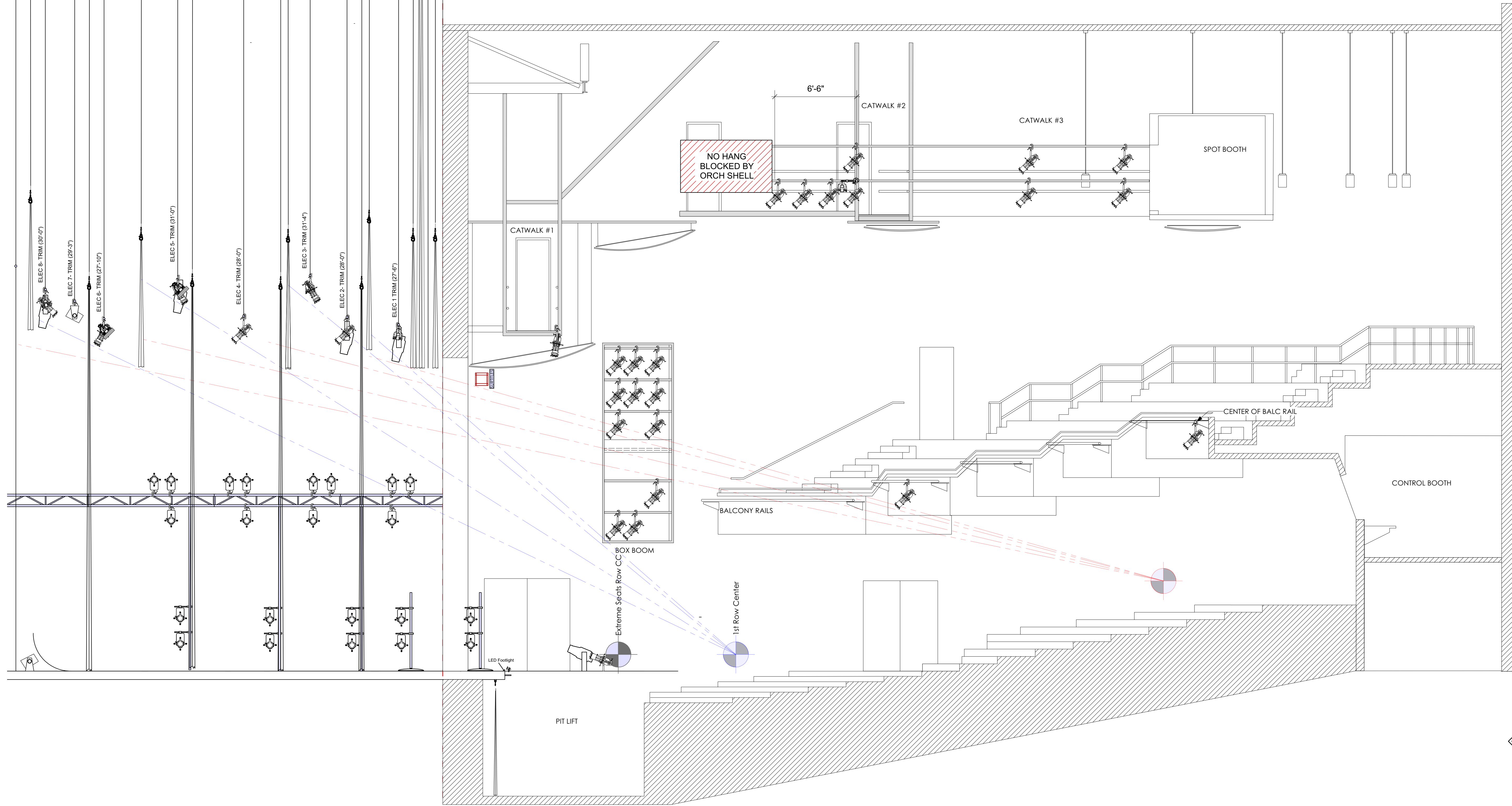
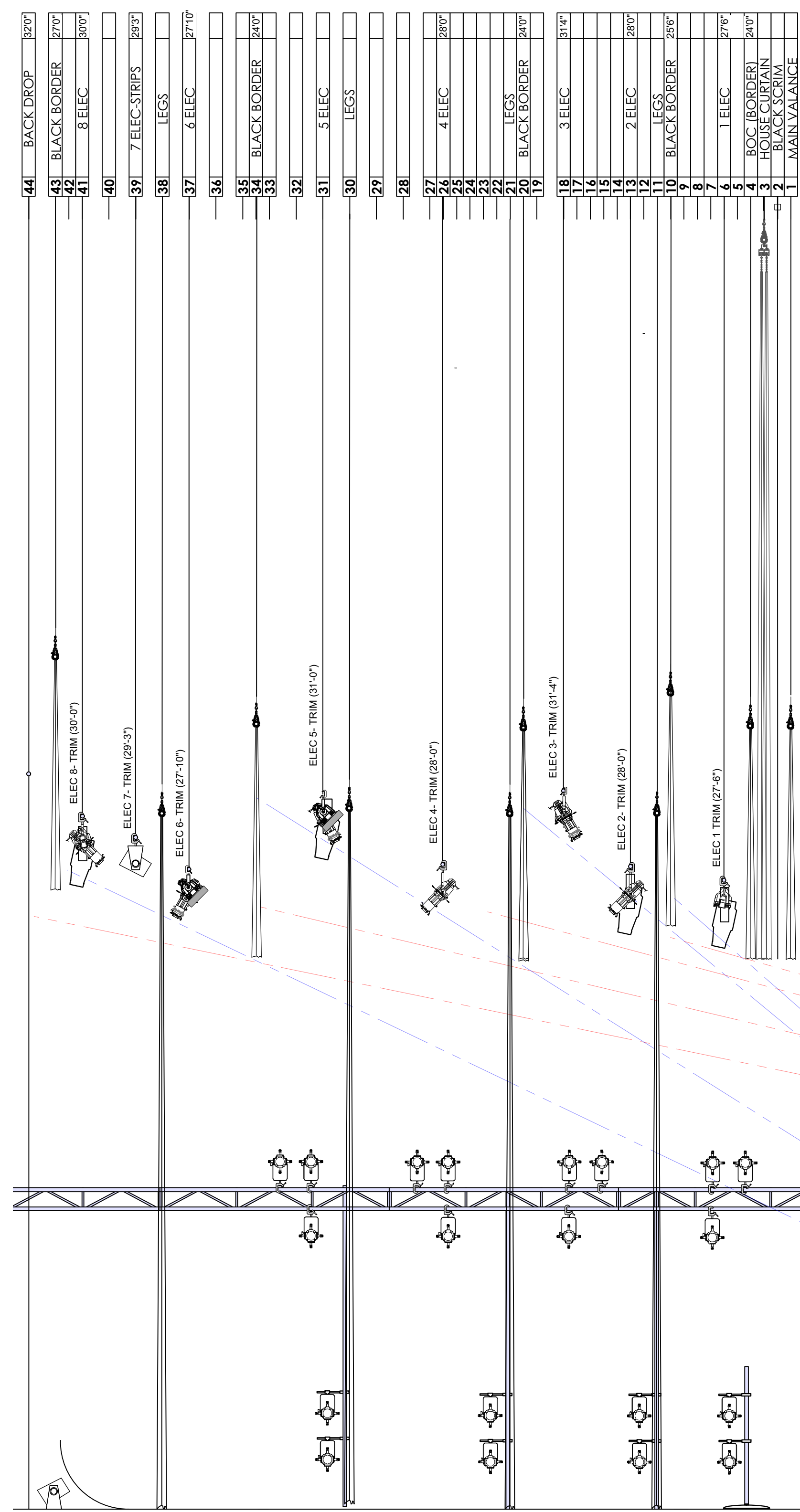
SCPA
 L.D. 659 LIGHTING DESIGNER

CORONATION OF POPPEA OVERSTAGE

2018 SEASON

Lighting Designer: Thomas Hase (hase@haseltd.com)
 Lighting Director: Thomas Hase (hase@haseltd.com)
 Assoc. Lighting Director: Bailey Costa (Bailey.Costa@yahoo.com)
 Production Electrician: EJ Mechley

Scale: 1/4" = 1'-0" Date: 6/14/18 Drawn: NBS Rev: 4



GENERAL NOTES

* ALL CHANGES PLEASE DISCUSS WITH THE LIGHTING DEPARTMENT STAFF.
 * ALL UNITS ON 18" CENTERS UNLESS OTHERWISE NOTED.
 *CHANNELS 179, 180, 169, 170 SEPARATE CIRCUITS

LIGHTING KEY

S4 10deg 575w	S4 35deg 575w	Van's Lite 1000 AS
S4 10deg 750w	S4 35deg 750w	Van's Lite 1100 AS
S4 14deg 575w	S4PAR MFL 575w	Van's Lite 2000 Spot
S4 14deg 750w	S4PAR WFL 575w	Mac 700 Wash
S4 19deg 575w	PAR 64 MFL 1000w	Solador Vivid D60
S4 19deg 750w	PAR 64 WFL 1000w	S4 Lustr 2 26 Degree
S4 25deg 575w	8" Fresnel 1000w	
S4 25deg 750w	8" Fresnel 750w	
S4 26deg 575w	L&L 2 Call Cyl Lin	
S4 26deg 750w	Mac-10 Footlight 1000w	"Snub-Nose" Birdie 250w EZK

Ministrp 4x4 Lamp EYC

ACCESSORIES

- Chrome-C Scroller
- Spectra-C Scroller
- House Spotlight TBD

Lighting Instrument Legend

- Color
- Template
- Purpose
- Instrument Number
- Channel
- Accessory Channel
- Wipe
- Flap

Not all units will contain all of the above information.

The Roman Emperor Nero was best known for his political murders, debaucheries, and a passion for music. This love of the arts also led to one of the famous rumors that Nero sang a "fiddle" as Rome burned during the great fire of 64 A.D. The arts were the Emperor's other love, and he held private events in which he would sing and play the lyre; he also encouraged the upper class to dance, and held public games in which he would participate. The Corbetts, who so generously gave to the arts and helped to build SCPA, held private concerts in their home as well, although not to highlight their own talent. Following the fire, Nero re-created Rome, and exhausted the treasury in doing so, building the Golden House and the 100-foot tall statue of himself, the Colossus Neronis. The Corbetts who have given so much to the arts in Cincinnati would have agreed with Nero's appreciation and funding of the arts, but perhaps not in his desire for excessive self-centeredness. Where Nero gave to the arts in order to benefit his own desires and to showcase his on musical skill, the Corbetts have generously given to provide for others countless times. From their contribution to Music Hall, to their funds for SCPA, they always gave to see that other talented artists could pursue their dreams. Nero would have found this devotion to the arts wonderful.

CINCINNATI OPERA
 1243 Elm Street, OH 45202
 (p)513.744.3477, (f)513.744.3452
 www.cincinnatiopera.org

LD 659 LIGHTING DESIGNER

SCPA

CORONATION OF POPPEA SECTION

2018 SEASON

Lighting Designer: Thomas Hase (hase@haseltd.com)
 Lighting Director: Thomas Hase (hase@haseltd.com)
 Assoc. Lighting Director: Bailey Costa (Bailey.Costa@yahoo.com)
 Production Electrician: EJ Mechley

